

ZvPro800i Series

1080p Unencrypted HDMI Encoder / Modulator with IP Streaming



ZvPro810i delivers uncompromising digital HD video distribution over your existing coax cabling from HDMI sources, as well as providing simultaneous IP streaming with no performance compromise. This one channel QAM, MPEG2, Encoder/Modulator unit allows you to easily distribute content up to 1080p resolution to an unlimited number of displays over and RF network, using the TV's built-in QAM tuner, or over an IP network to set-topboxes connected to displays.

Manage ZvPro units can be managed locally through the color LCD screen or via an intuitive web-based, management interface – Maestro. Generate a looping signage channel with ZvShow, deliver messages to any screening using the built-in Emergency Alert System.

SUPERIOR VIDEO QUALITY

- Full MPEG-2 implementation
- I, P, and B Frames
- Low latency
- Full motion estimation with a wide search range

EXTENSIBLE ARCHITECTURE

- Easy downloadable firmware updates
- Future enhancements provided regularly
- Emergency Alert System (EAS)

The ZvPro supports audio encoding and the included Closed Captioning makes your installation ADA compliant.

MODELS:

ZvPro810i-EU

1 x unencrypted HDMI video input up to 1080i/1080p. MPEG2 DVB-T/C RF and UDP IP stream output.

ZvPro820i-EU

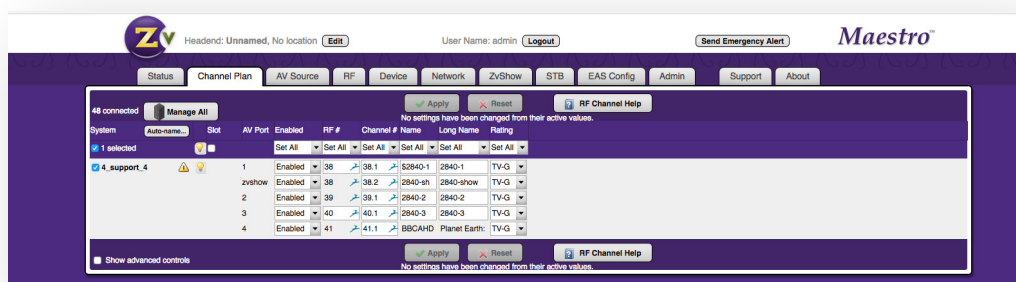
2x unencrypted HDMI video input up to 1080i/1080p. MPEG2 DVB-T/C RF and UDP IP stream output.

HIGH RELIABILITY

- Low-stress power system
- Full system instrumentation and monitoring
- Official international regulatory approval
- Forced air cooling for effective thermal control

EASE OF MANAGEMENT

- Powerful, highly intuitive web interface
- On-site or remote management
- Configure/manage multiple units from front Panel Display for local management



ZvPro 800 Series Web-based Administration Interface

General

Power: 100–240 VAC 50/60 Hz, 36W max. 18W Typical IEC 60320-C14	Cooling: : Internal cooling fan, front inlet, rear exhaust MBTF: 62,000 hours System Weight: 3.1 lbs. (1.4 kg)	Temperature/Humidity: Operating +32 F ⁰ to +113 F ⁰ (0 C ⁰ to +45 C ⁰) / 10% to 80%, non-condensing
Compliance: FCC Class A, IEC60065, EN61000 (see manual #70-00047), CE, RoHS	Enclosure Dimensions: 8 in. (H) x 10 in. (W) x 1.75 in. (H) 20.32 cm (H) x 25.4 cm (W) x 4.445 cm (H)	Enclosure Type: Metal Shipping Weight: 5 lbs. (2.3 kg)
Mounting: Shelf mount flange or rack ears (ordered separately), 1 RU high	Carton Dimensions (individual): 2.75 in. (H) 14 in. x (W) 12 in. (D) 6.985 cm (H) 35.56 cm (W) x 30.48 cm (D)	Warranty: 5 Years Vibration: NSTA 1A in carton

Input

Unencrypted HDMI x2 or x1: One (1) or two (2) ports per model up to 1080HDMI 1.3 compliant. Backwards compatible to DVI 1.0 specifications	Closed Caption: EIA/CEA-608 captions accepted over composite video input	Extra Digital Channel: MPEG2 program stream file, up to 200 MB
Audio Input: Digital Audio and Stereo Analog	Digital as element of HDMI 1.3 port or 3.5 mm stereo female, line level input per channel	

Video Encoder

Encoder Video Profile: MPEG2 HD: ISO13818-2 MainProfile@ HighLevel	Traffic Shaping: Variable Bit Rate	Video Encoding Data Rates: Variable, 10 Mbs – 24 Mbs per channel
Average Encoding Data Rate: 18 Mbs per channel	Encoding Latency: Programmable 200 msec to 400 msec	Color Profile: 4:2:0
Encoder Audio Profile: ATSC A/52, (AC-3)	Video, Audio PID: Programmable starting value	Program Information: Programmable program name, EIT
GOP Size: 15		

Modulator/Upverter

Modulation Types: QAM 256 and 64 (ITU-T J83 Annex B) Interleaving modes: (64,2) only	Cable Standard: HRC, IRC or STD	Frequency Range: Single or one paired, frequency agile QAM RF CATV channels 2-135
Output Power: +45 dBmV typical	Output Level Adjust: 25 – 45 dBmV in 1dBmV steps	<ul style="list-style-type: none"> • 2kHz resolution • +/- 30 ppm accuracy • +/- 35 ppm stability
I/Q Amplitude Imbalance: < 1% typical	Spectral Tilt: <= 1 dB over 6 MHz typical	MER : > 38 dB typical
	IP Stream Output RJ-45 10/100Mb Ethernet connection <ul style="list-style-type: none"> • Up to 2 SPTS, one for each encoded video stream • UDP unicast or multicast, IPV4 • User programmable destination address / port 	

Control Setup

Network Interface	10/100 Mb Ethernet via RJ45 connection IP address via DHCP or set by user HTML/Javascript served web interface for easy configuration Telnet connection for CLI scripting Easy firmware updates All settings saved in NV storage
Front Panel Color Display	Quickly obtain status at a glance, basic configurations, software revisions and updates

About ZeeVee

ZeeVee is a leading provider of AV distribution technology. The company has transformed the digital video industry with its award-winning encoders, decoders and software solutions for the pro AV and IT marketplace. Integrators and consultants rely on ZeeVee for its innovative, cost-effective and easy to install AVoIP and RF distribution platforms for their corporate, higher education, government, healthcare, casino, museum, hospitality and retail customers. A founding member of the SDVoE Alliance and a PSNI Global Alliance Preferred Vendor Partner, ZeeVee holds a GSA schedule, and its products are TAA-compliant. ZeeVee is headquartered in the greater Boston area with European HQ in Augsburg, Germany and SE Asian offices in Singapore. For more information visit www.zeevee.com. ZeeVee products are TAA Compliant. ZeeVee holds GSA Contract # 47QTCA19D00JZ.