

ZvPro800 Series

1080p HDMI Encoder / Modulator



The ZvPro800 series encoder/modulator delivers uncompromising digital HD video distribution over your existing coax cabling from your component or VGA HD sources. The ZvPro600 series allows you to easily distribute content up to 1080p resolution to an unlimited number of displays, using the TV's built-in QAM tuner, eliminating the need for cumbersome, expensive set-top-boxes or media players at each display.

Manage ZvPro units can be managed locally through the color LCD screen or via an intuitive web-based, management interface – Maestro. Generate a looping signage channel with ZvShow, deliver messages to any screening using the built-in Emergency Alert System.

SUPERIOR VIDEO QUALITY

- Full MPEG-2 implementation
- I, P, and B Frames
- Low latency
- Full motion estimation with a wide search range

EXTENSIBLE ARCHITECTURE

- Easy downloadable firmware updates
- Future enhancements provided regularly
- Emergency Alert System (EAS)

The ZvPro supports AC-3 audio encoding and the included Closed Captioning makes your installation ADA compliant.

MODELS:

ZvPro810-NA
ZvPro810-MX*

1 x HDMI video input up to 1080i/1080p

ZvPro820-NA
ZvPro820-MX*

2 x HDMI video input up to 1080i/1080p

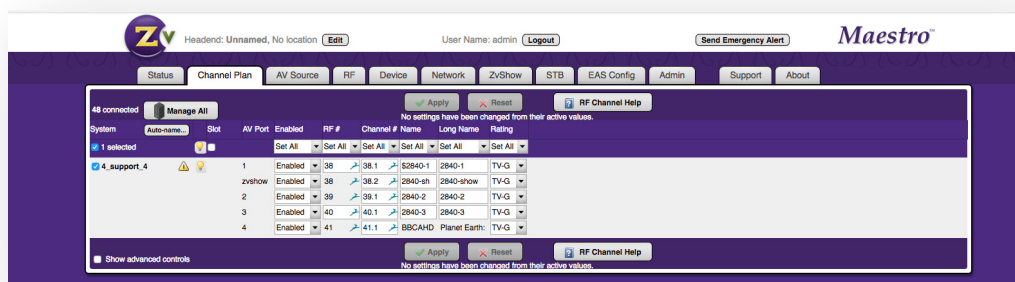
**MX version must be ordered for pass-through*

HIGH RELIABILITY

- Low-stress power system
- Full system instrumentation and monitoring
- Official international regulatory approval
- Forced air cooling for effective thermal control

EASE OF MANAGEMENT

- Powerful, highly intuitive web interface
- On-site or remote management
- Configure/manage multiple units from front Panel Display for local management



ZvPro 800 Series Web-based Administration Interface

General

| | | |
|--|--|--|
| Power: 100–240 VAC 50/60 Hz, 36W max. 18W Typical IEC 60320–C14 | Cooling : Internal cooling fan, front inlet, rear exhaust MTBF: 62,000 hours System Weight: 3.1 lbs. (1.4 kg) | Temperature/Humidity: Operating +32 F° to +113 F° (0 C° to +45 C°) / 10% to 80%, non-condensing |
| Compliance: FCC Class A, IEC60065, EN61000 (see manual #70-00047), CE, RoHS | Enclosure Dimensions: 8 in. (H) x 10 in. (W) x 1.75 in. (H) 20.32 cm (H) x 25.4 cm (W) x 4.445 cm (H) | Enclosure Type: Metal Shipping Weight: 5 lbs. (2.3 kg) |
| Mounting: Shelf mount flange or rack ears (ordered separately), 1 RU high | Carton Dimensions (individual): 2.75 in. (H) 14 in. x (W) 12 in. (D) 6.985 cm (H) 35.56 cm (W) x 30.48 cm (D) | Warranty: 5 Years Vibration: NSTA 1A in carton |

Input

| | | |
|---|---|--|
| HDMI x2 or x1: One (1) or two (2) ports per model up to 1080HDMI 1.3 compliant. Backwards compatible to DVI 1.0 specifications | Closed Caption: EIA/CEA-608 captions accepted over composite video input | Extra Digital Channel: MPEG2 program stream file, up to 200 MB |
| Audio Input: Digital Audio and Stereo Analog | Digital as element of HDMI 1.3 port or 3.5 mm stereo female, line level input per channel | |

Video Encoder

| | | |
|--|--|---|
| Encoder Video Profile: MPEG2 HD: ISO13818–2 MainProfile@ HighLevel | Traffic Shaping: Variable Bit Rate | Video Encoding Data Rates: Variable, 10 Mbs – 24 Mbs per channel |
| Average Encoding Data Rate: 18 Mbs per channel | Encoding Latency: Programmable 200 msec to 400 msec | Color Profile: 4:2:0 |
| Encoder Audio Profile: ATSC A/52, (AC-3) | Video, Audio PID: Programmable starting value | Program Information: Programmable program name, EIT |
| GOP Size: 15 | | |

Modulator/Upverter

| | | |
|--|---|--|
| Modulation Types: QAM 256 and 64 (ITU-T J83 Annex B) Interleaving modes: (64,2) only | Cable Standard: HRC, IRC or STD | Frequency Range: Single or one paired, frequency agile QAM RF CATV channels 2–135 |
| Output Power: +45 dBmV typical | Output Level Adjust: 25 – 45 dBmV in 1dBmV steps | <ul style="list-style-type: none"> • 2kHz resolution • +/- 30 ppm accuracy • +/- 35 ppm stability |
| I/Q Amplitude Imbalance: < 1% typical | Spectral Tilt: < /= 1 dB over 6 MHz typical | MER : > 38 dB typical |

Control Setup

| | |
|----------------------------------|---|
| Network Interface | 10/100 Mb Ethernet via RJ45 connection IP address via DHCP or set by user HTML/Javascript served web interface for easy configuration Telnet connection for CLI scripting Easy firmware updates All settings saved in NV storage |
| Front Panel Color Display | Quickly obtain status at a glance, basic configurations, software revisions and updates |

About ZeeVee

ZeeVee, Inc., headquartered in Littleton, Mass., and founded in 2007, is a leading global developer of digital technology and products for distributing audio–video content from any source or multiple sources to any number of displays. Manufactured in the U.S. and used primarily in commercial and corporate applications, ZeeVee products are employed worldwide by major organizations in education, government, hospitality, retail, sports, entertainment, broadcasting, healthcare, housing, energy and other industries. For more information visit www.zeevee.com

ZeeVee products are TAA Compliant. ZeeVee holds GSA Contract # 47QTCA19D00JZ.

REV20220713