

# ZvPro800i Series

1080p Unencrypted HDMI Encoder / Modulator with IP Streaming



ZvPro810i delivers uncompromising digital HD video distribution over your existing coax cabling from HDMI sources, as well as providing simultaneous IP streaming with no performance compromise. This one channel QAM, MPEG2, Encoder/Modulator unit allows you to easily distribute content up to 1080p resolution to an unlimited number of displays over and RF network, using the TV's built-in QAM tuner, or over an IP network to set-topboxes connected to displays.

Manage ZvPro units can be managed locally through the color LCD screen or via an intuitive web-based, management interface – Maestro. Generate a looping signage channel with ZvShow, deliver messages to any screening using the built-in Emergency Alert System.

## SUPERIOR VIDEO QUALITY

- Full MPEG-2 implementation
- I, P, and B Frames
- Low latency
- Full motion estimation with a wide search range

## EXTENSIBLE ARCHITECTURE

- Easy downloadable firmware updates
- Future enhancements provided regularly
- Emergency Alert System (EAS)

The ZvPro supports Dolby Digital audio encoding and the included Closed Captioning makes your installation ADA compliant.

## MODELS:

**ZvPro810i-NA**  
**ZvPro810i-MX\***

1 x unencrypted HDMI video input up to 1080i/1080p

**ZvPro820i-NA**  
**ZvPro820i-MX\***

2 x unencrypted HDMI video input up to 1080i/1080p

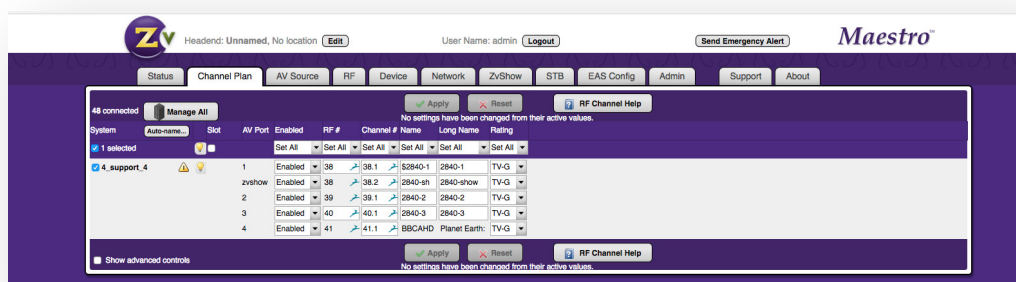
*\*MX version must be ordered for pass-through*

## HIGH RELIABILITY

- Low-stress power system
- Full system instrumentation and monitoring
- Official international regulatory approval
- Forced air cooling for effective thermal control

## EASE OF MANAGEMENT

- Powerful, highly intuitive web interface
- On-site or remote management
- Configure/manage multiple units from front Panel Display for local management



ZvPro 800 Series Web-based Administration Interface

## General

<b>Power:</b> 100–240 VAC 50/60 Hz, 36W max. 18W Typical IEC 60320-C14	<b>Cooling:</b> : Internal cooling fan, front inlet, rear exhaust <b>MBTF:</b> 62,000 hours <b>System Weight:</b> 3.1 lbs. (1.4 kg)	<b>Temperature/Humidity:</b> Operating +32 F° to +113 F° (0 C° to +45 C°) / 10% to 80%, non-condensing
<b>Compliance:</b> FCC Class A, IEC60065, EN61000 (see manual #70-00047), CE, RoHS	<b>Enclosure Dimensions:</b> 8 in. (H) x 10 in. (W) x 1.75 in. (H) 20.32 cm (H) x 25.4 cm (W) x 4.445 cm (H)	<b>Enclosure Type:</b> Metal <b>Shipping Weight:</b> 5 lbs. (2.3 kg)
<b>Mounting:</b> Shelf mount flange or rack ears (ordered separately), 1 RU high	<b>Carton Dimensions (individual):</b> 2.75 in. (H) 14 in. x (W) 12 in. (D) 6.985 cm (H) 35.56 cm (W) x 30.48 cm (D)	<b>Warranty:</b> 5 Years <b>Vibration:</b> NSTA 1A in carton

## Input

<b>Unencrypted HDMI x2 or x1:</b> One (1) or two (2) ports per model up to 1080HDMI 1.3 compliant. Backwards compatible to DVI 1.0 specifications	<b>Closed Caption:</b> EIA/CEA-608 captions accepted over composite video input	Extra Digital Channel: MPEG2 program stream file, up to 200 MB
<b>Audio Input:</b> Digital Audio and Stereo Analog	Digital as element of HDMI 1.3 port or 3.5 mm stereo female, line level input per channel	

## Video Encoder

<b>Encoder Video Profile:</b> MPEG2 HD: ISO13818-2 MainProfile@ HighLevel	<b>Traffic Shaping:</b> Variable Bit Rate	<b>Video Encoding Data Rates:</b> Variable, 10 Mbs – 24 Mbs per channel
<b>Average Encoding Data Rate:</b> 18 Mbs per channel	<b>Encoding Latency:</b> Programmable 200 msec to 400 msec	<b>Color Profile:</b> 4:2:0
Encoder Audio Profile: ATSC A/52, (AC-3)	<b>Video, Audio PID:</b> Programmable starting value	<b>Program Information:</b> Programmable program name, EIT
<b>GOP Size:</b> 15		

## Modulator/Upverter

<b>Modulation Types:</b> QAM 256 and 64 (ITU-T J83 Annex B) <b>Interleaving modes:</b> (64,2) only	<b>Cable Standard:</b> HRC, IRC or STD	<b>Frequency Range:</b> Single or one paired, frequency agile QAM RF CATV channels 2-135
<b>Output Power:</b> +45 dBmV typical	<b>Output Level Adjust:</b> 25 – 45 dBmV in 1dBmV steps	<ul style="list-style-type: none"> <li>• 2kHz resolution</li> <li>• +/- 30 ppm accuracy</li> <li>• +/- 35 ppm stability</li> </ul>
<b>I/Q Amplitude Imbalance:</b> < 1% typical	<b>Spectral Tilt:</b> <= 1 dB over 6 MHz typical	<b>MER :</b> > 38 dB typical
	<b>IP Stream Output</b> RJ-45 10/100Mb Ethernet connection <ul style="list-style-type: none"> <li>• Up to 2 SPTS, one for each encoded video stream</li> <li>• UDP unicast or multicast, IPV4</li> <li>• User programmable destination address / port</li> </ul>	

## Control Setup

<b>Network Interface</b>	10/100 Mb Ethernet via RJ45 connection IP address via DHCP or set by user HTML/Javascript served web interface for easy configuration Telnet connection for CLI scripting Easy firmware updates All settings saved in NV storage
<b>Front Panel Color Display</b>	Quickly obtain status at a glance, basic configurations, software revisions and updates

## About ZeeVee

ZeeVee, Inc., headquartered in Littleton, Mass., and founded in 2007, is a leading global developer of digital technology and products for distributing audio–video content from any source or multiple sources to any number of displays. Manufactured in the U.S. and used primarily in commercial and corporate applications, ZeeVee products are employed worldwide by major organizations in education, government, hospitality, retail, sports, entertainment, broadcasting, healthcare, housing, energy and other industries. For more information visit [www.zeevee.com](http://www.zeevee.com)

ZeeVee products are TAA Compliant. ZeeVee holds GSA Contract # 47QTCA19D00JZ.

REV20220712