

# HDb2900 Series

## Dual Channel HD-SDI Encoder/Modulator



For organizations looking to encode and modulate unencrypted HDMI sources cost-effectively, the HDb2900 Series is a great option. This four channel encoder/modulator allows you to deliver HD video up to 1080p/i resolution to an unlimited number of displays over almost any distance.

The HDb2900 series converts high definition AV sources into an RF signal received a television's QAM (NA model) or DVB-T/C (EU model) digital tuner over coax cable. With its high 45 dBmV RF output, you can send your content to an unlimited number of displays over nearly any distance.

### SUPERIOR VIDEO QUALITY

- Full MPEG-2 implementation
- I, P, and B Frames
- Low latency
- Full motion estimation with a wide search range

### EXTENSIBLE ARCHITECTURE

- Easy downloadable firmware updates
- Future enhancements provided regularly
- Emergency Alert System (EAS)

Multiple units can be combined to create a headend that supports over 100 channels on the RF network. This unit is designed primarily for high channel density environments where rapid deployment, advanced management, and compatibility are critical.

### MODELS:

#### HDb2920-EU

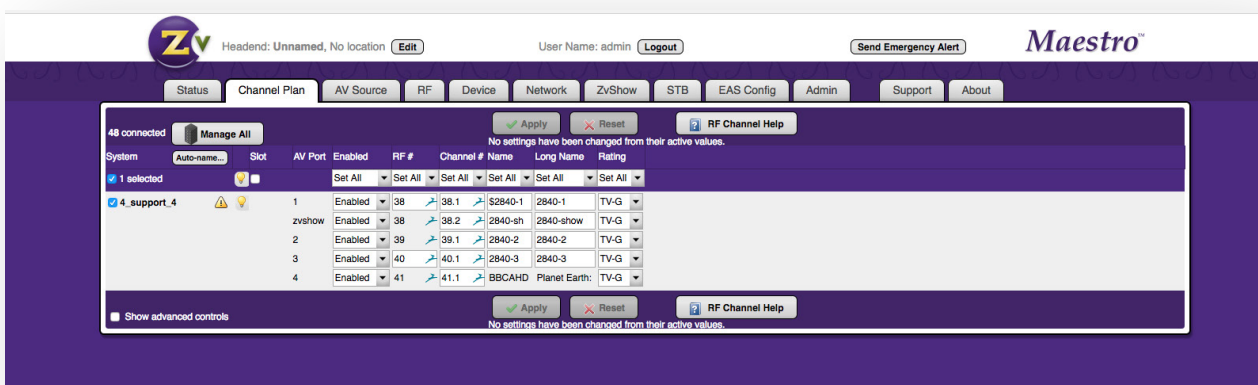
2 HD-SDI video inputs with embedded digital audio inputs up to 1080i/1080p

### HIGH RELIABILITY

- Low-stress power system
- Full system instrumentation and monitoring
- Official international regulatory approval
- Forced air cooling for effective thermal control

### EASE OF MANAGEMENT

- Powerful, highly intuitive web interface
- On-site or remote management
- Configure/manage multiple units from front Panel Display for local management



HDb2900 Series Web-based Administration Interface

## General

<b>Power:</b> 100–240 VAC 50/60 Hz, 60W max. 30W Typical IEC 60320-C14	<b>Cooling:</b> Dual internal cooling fans, Front inlet, Rear exhaust <b>MBTF:</b> 62,000 hours	<b>Temperature/Humidity:</b> Operating +32 F <sup>0</sup> to +113 F <sup>0</sup> (0 C <sup>0</sup> to +45 C <sup>0</sup> ) / 10% to 80%, non-condensing
<b>Compliance:</b> FCC Class A, IEC60065, EN61000 (see manual 70-00031-00), CE, RoHS, RCM C-Tick	<b>Enclosure Dimensions:</b> 1.72 in. (H) x 17.33 in. (W) (without rack mount ears) x 9.9 in. (D) 43.6 mm (H) x 440.2 mm (W) x 251.5 mm (D)	<b>Enclosure Type:</b> Metal <b>Shipping Weight:</b> 6.5 lbs. (2.95 kg) <b>Shipping Weight:</b> 8.13 lbs. (3.69 kg)
<b>Mounting:</b> Rack ears shipped attached, 1RU high	<b>Carton Dimensions (individual):</b> 4.25 in. (H) 30.875 in. W 12.125 in (D) 108 mm (H) 785 (mm) W 308 (mm) (D)	<b>Warranty:</b> 5 Years <b>Vibration:</b> NSTA 1A in carton

## Input

<b>Serial Digital Interface:</b> Two ports of (HD/3G) Serial Digital Interface video (BNC, 75 ohm)	<b>Supported Resolutions:</b> 480i (SDI, HD-SDI, 3G-SDI) B27; 720p @ 59.94/60 Hz (HD-SDI, 3G-SDI); 1080i @ 59.94/60 Hz (HD-SDI, 3G-SDI); 1080p @ 23.98/24/29.97/30 Hz (3G-SDI), Embedded AC3 or PCM audio supported (59.94/60 down-sampled for standard broadcast)	<b>Electrical Formats:</b> SDI (SMPTE 259M), HD-SDI (SMPTE 292M), 3G-SDI (SMPTE 424M)
<b>Digital Audio and Stereo Analog:</b> Digital as element of SDI port or 3.5 mm stereo female, line level input per channel		Extra Digital Channel: MPEG2 Program stream file, up to 200 MB Encoder Audio Profile: ATSC A/52, Dolby® Digital (AC-3)

## Video Encoder

<b>Encoder Video Profile:</b> MPEG2 HD: ISO13818-2 MainProfile@ HighLevel	<b>Traffic Shaping:</b> Variable Bit Rate	<b>Video Encoding Data Rates:</b> Variable, 10 Mbs - 24 Mbs per channel
Average Encoding Data Rate: 18 Mbs per channel	<b>Encoding Latency:</b> Programmable 200 msec to 400 msec	<b>Color Profile:</b> 4:2:0
GOP Size: 15	<b>Video, Audio PID:</b> Programmable starting value	<b>Program Information:</b> Programmable program name, EIT

## Modulator/Upverter

<b>Modulation Types:</b> QAM 256 and 64 (ITU-T J83 Annex B) <b>Interleaving modes:</b> (64,2) only	<b>Cable Standard:</b> HRC, IRC or STD	<b>Frequency Range:</b> 4 paired, frequency agile QAM RF CATV Channels 2-135 • 2kHz resolution • +/- 30 ppm accuracy • +/- 35 ppm stability
<b>Output Power:</b> +45 dBmV typical	<b>Output Level Adjust:</b> 25 - 45 dBmV in 1dBmV steps	
<b>I/Q Amplitude Imbalance:</b> < 1% typical	<b>Spectral Tilt:</b> < /= 1 dB over 6 MHz typical	<b>MER :</b> > 38 dB typical

## Control Setup

<b>Network Interface</b>	10/100 Mb Ethernet via RJ45 connection IP address via DHCP or set by user HTML/Javascript served web interface for easy configuration Telnet connection for CLI scripting Easy firmware updates All settings saved in NV storage
<b>Front Panel Color Display</b>	Quickly obtain status at a glance, basic configurations, software revisions and updates

## About ZeeVee

ZeeVee, Inc., headquartered in Littleton, Mass., and founded in 2007, is a leading global developer of digital technology and products for distributing audio-video content from any source or multiple sources to any number of displays. Manufactured in the U.S. and used primarily in commercial and corporate applications, ZeeVee products are employed worldwide by major organizations in education, government, hospitality, retail, sports, entertainment, broadcasting, healthcare, housing, energy and other industries. For more information visit [www.zeevee.com](http://www.zeevee.com)

ZeeVee products are TAA Compliant. ZeeVee holds GSA Contract # 47QTCA19D00JZ.  
REV20220718